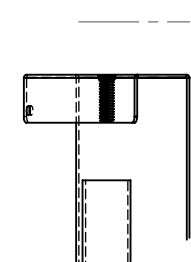
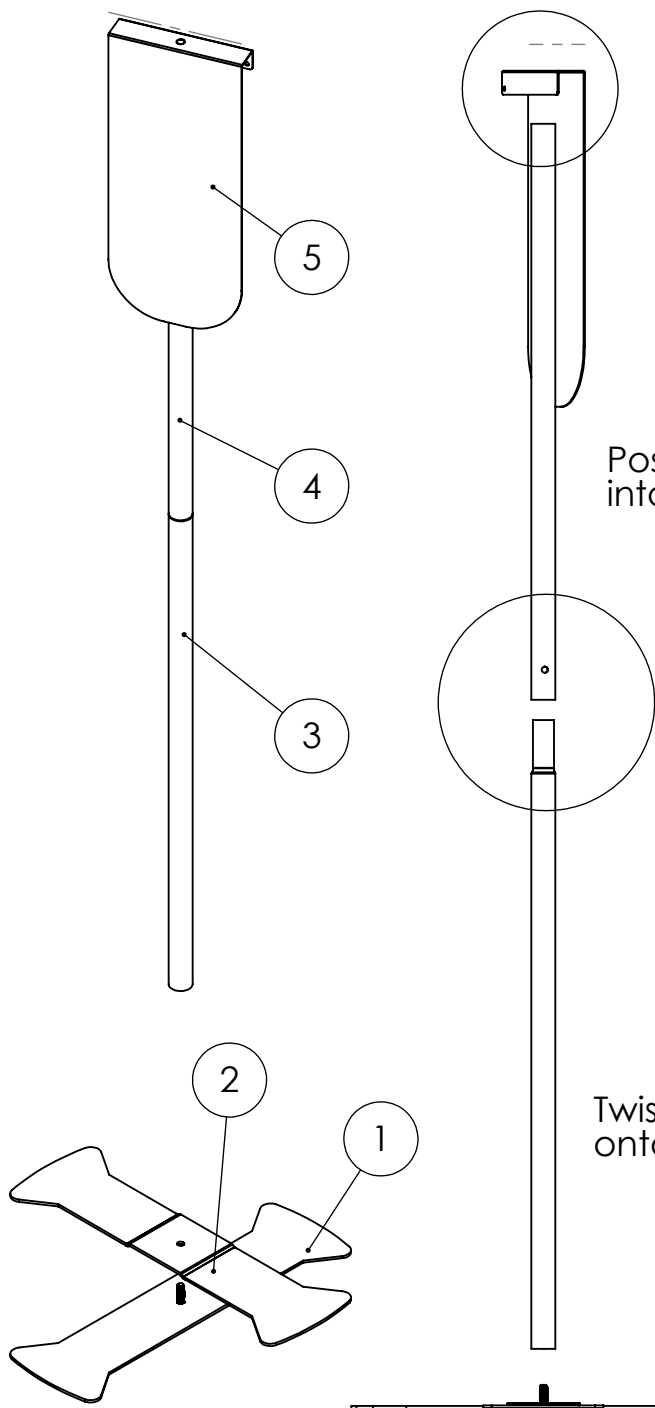


ASTORIA-2-NL-W 4 FT STEEL HAND SANITIZER DISPENSER STAND

ITEM NO.	PART NUMBER	DESCRIPTION	QTY.
1	BaseWithStud	Flat Base	1
2	BaseWithOffset	Formed Base	1
3	BottomTube	Tube with pressed edge	1
4	TopTube	Straight tube	1
5	BackFlapNoLip14in	Backplate	1
6	Stickers	Sticker strip for dispenser	1



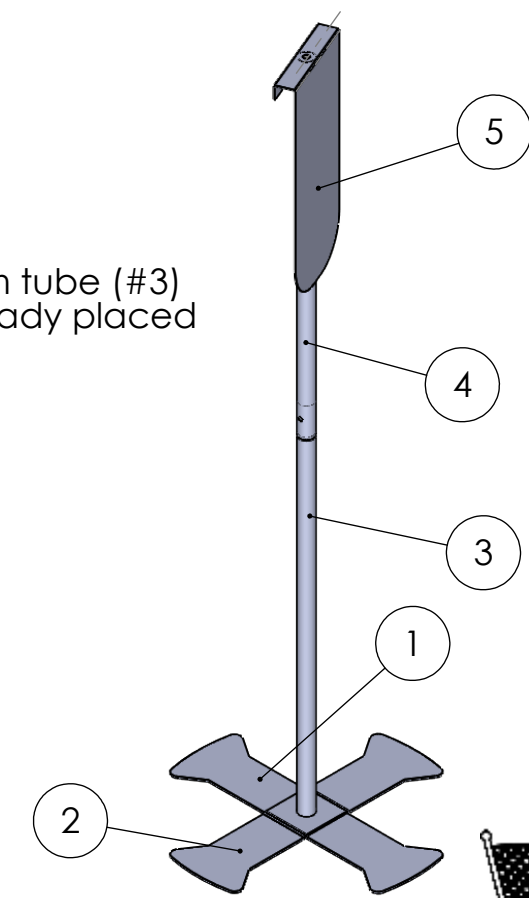
Position backplate (#5) and twist bolt into top tube #4



Add top tube (#4) to bottom tube (#3) using spring insert (insert already placed inside tube (#3))

Twist base assembly (#1 & #2) onto bottom tube (#3)

Add bottom formed base (#2) to flat base (#1)



To Affix Dispenser:
 To affix dispenser to the Astoria Stand, please use the dual stick square stickers enclosed with this stand. Place stickers on each corner of the dispenser and across the top. Carefully position the dispenser flush to the top of the backplate and press firmly to secure.