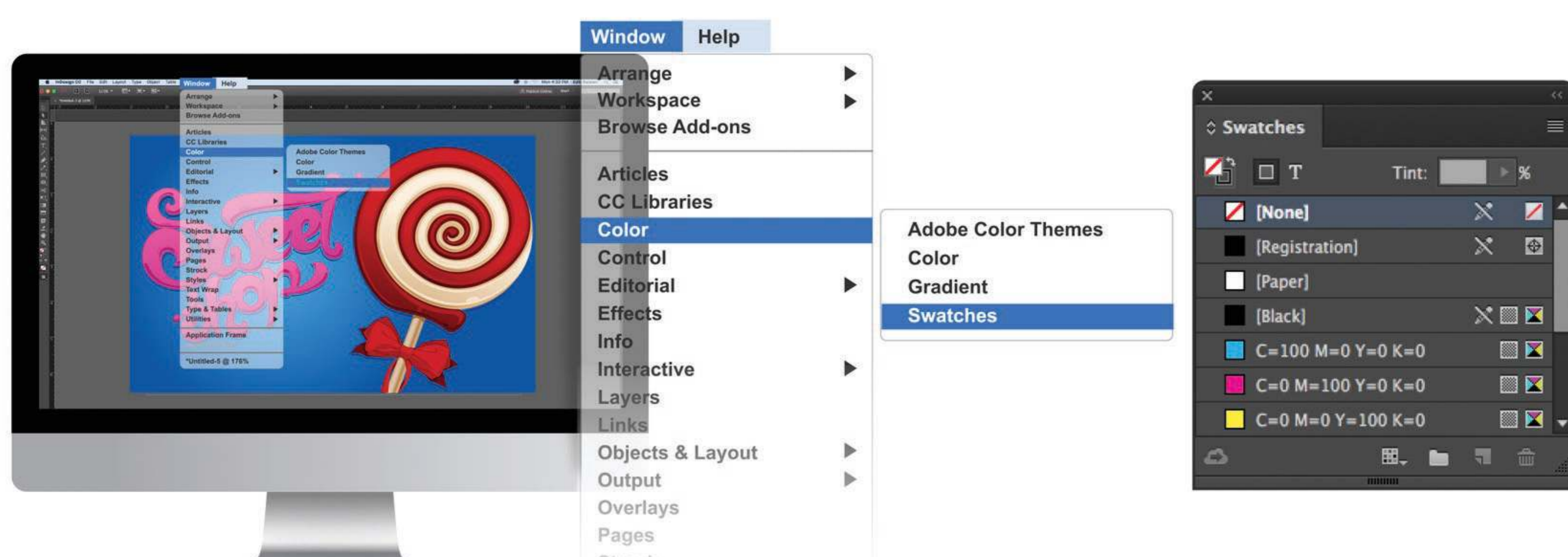


Swatch name must match the following: **RUV**



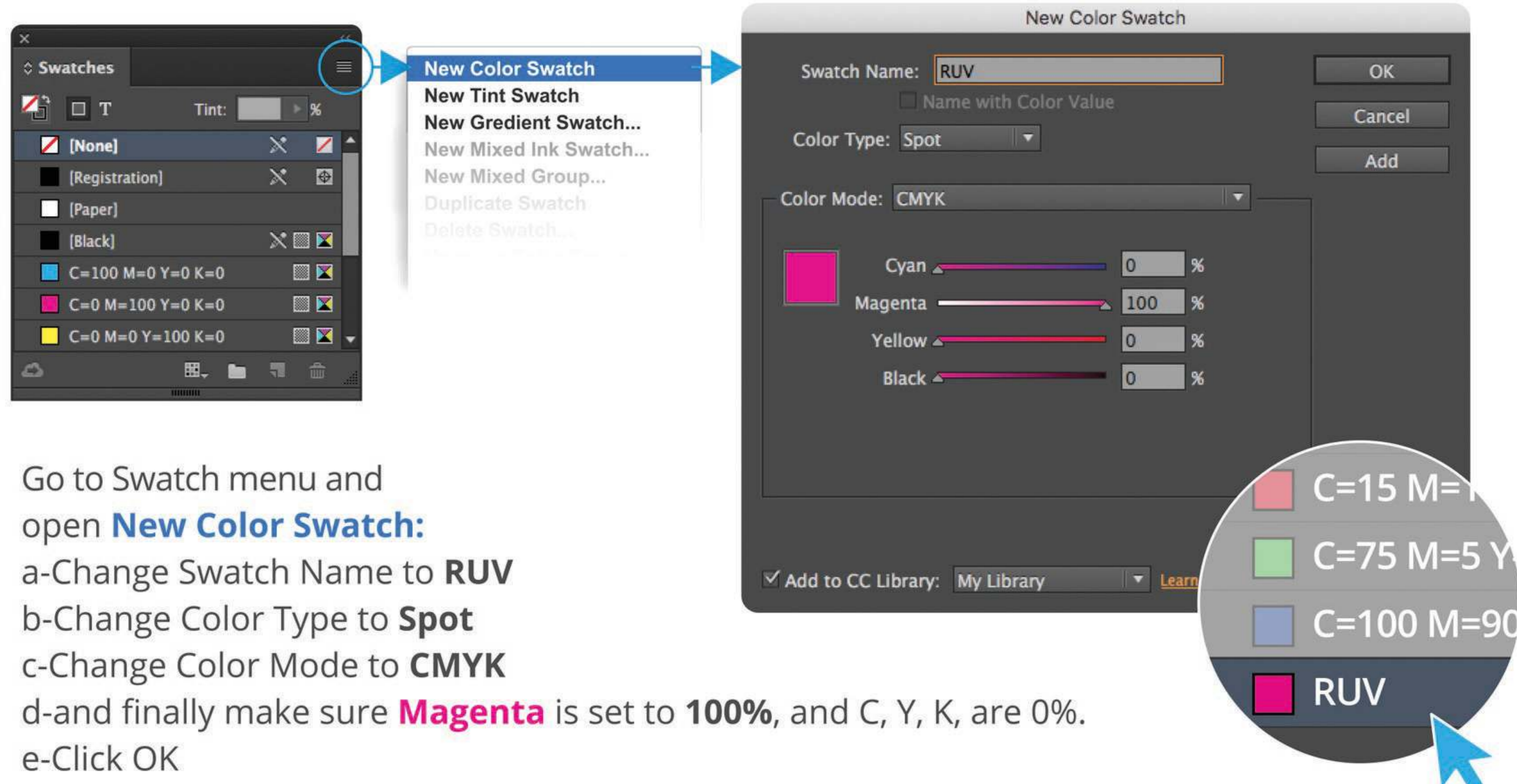
Please note: If the swatch name is incorrect, the order will be placed on hold and the file will be sent back via email for revisions.

1 Open your CMYK artwork in InDesign



From the top menu, go to **window**, then **Color** and open **Swatches**

2



Go to Swatch menu and open **New Color Swatch**:

- a-Change Swatch Name to **RUV**
- b-Change Color Type to **Spot**
- c-Change Color Mode to **CMYK**
- d-and finally make sure **Magenta** is set to **100%**, and C, Y, K, are 0%.
- e-Click OK

3

Create your Raised UV area using one of the following methods:



A-Mask all non-Raised UV areas.

B-With any tracing or pen tool, draw your desired **Raised UV** area element(s).

4

Select all the elements which you would like **RUV** applied.

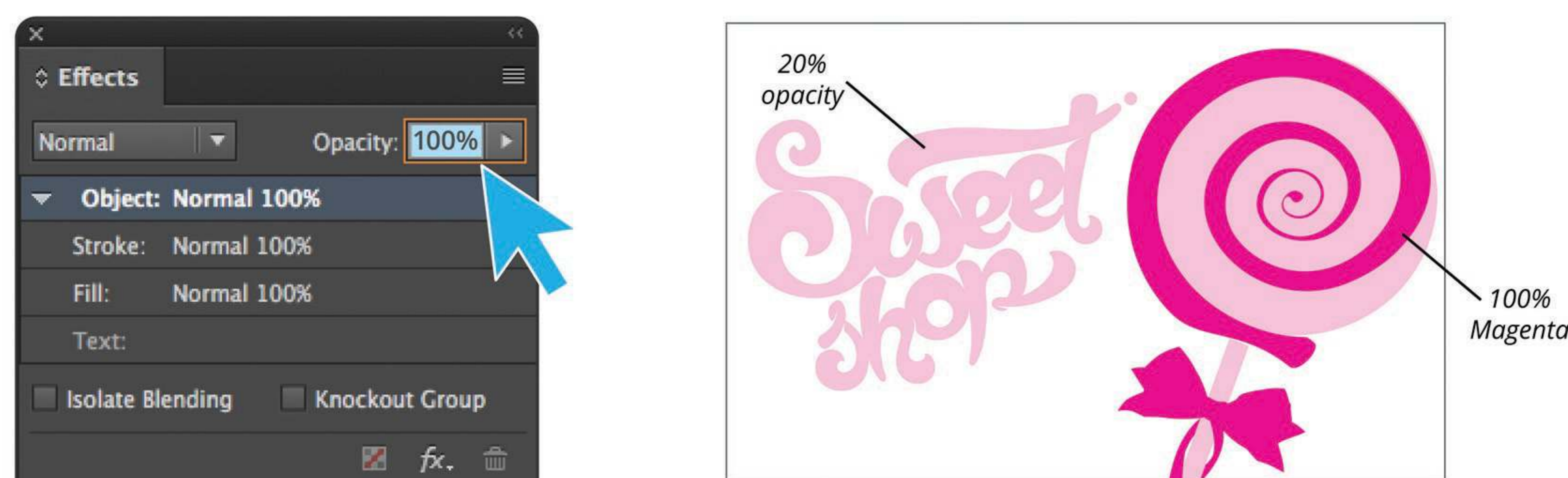


From top of menu, go to **Edit**, then **Copy** and finally **Paste in Place**. This will create a duplicate of the selection on top of the original.

Select the copied object on the top layer and change the color to **RUV** in the swatch palette.

5

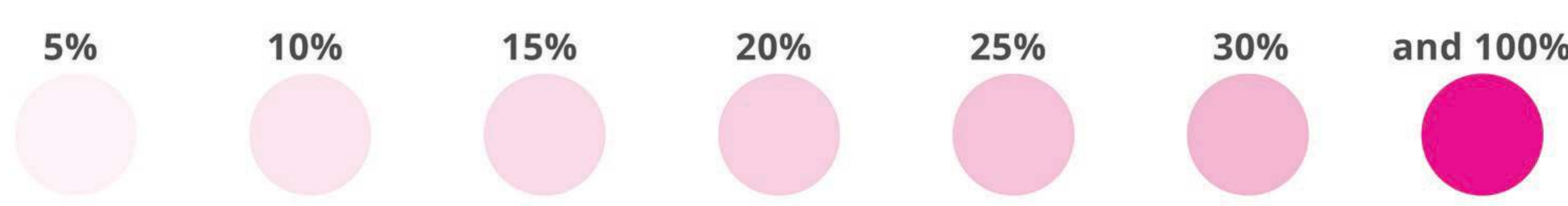
Once you have your desired RUV elements, to have multi-level Raised UV, from the top menu, go to **window**, then **open Effects** and start applying different opacity to the **RUV** elements.



RECOMMENDED:

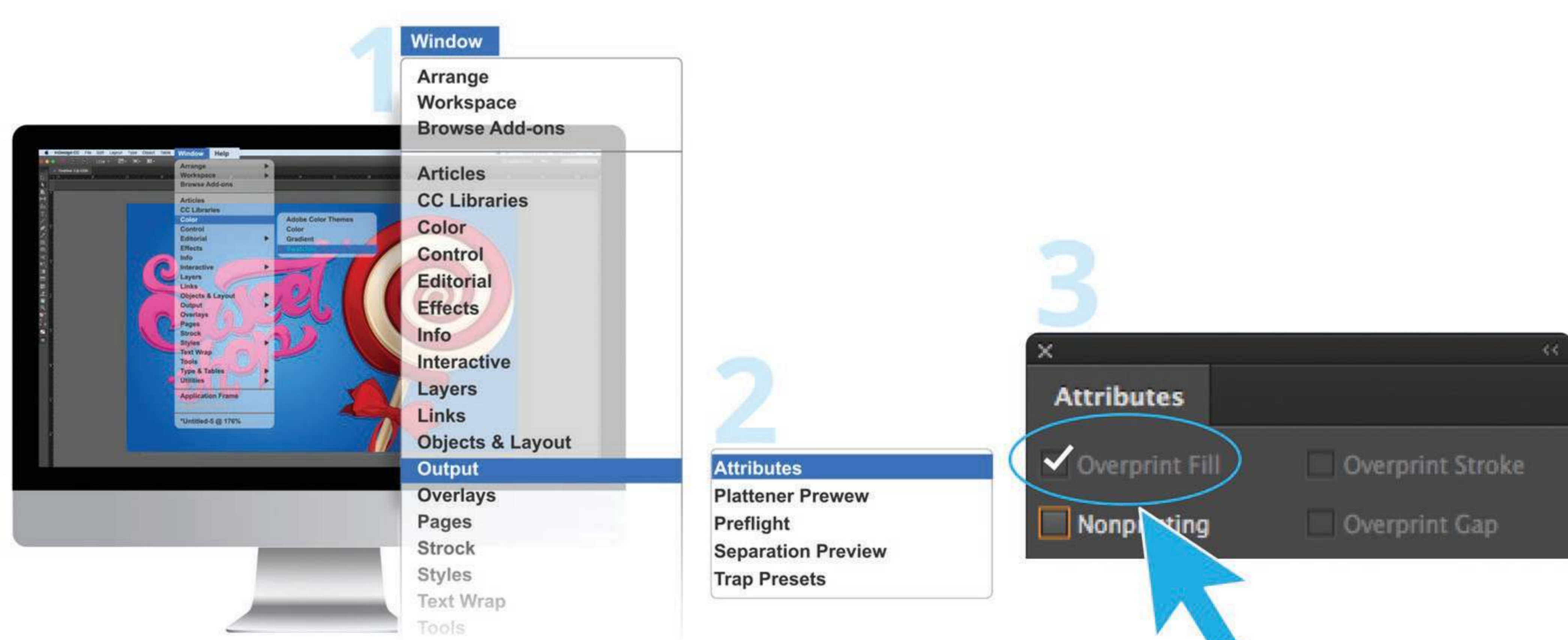
To create **Multi-Level RUV**, use the same spot color swatch in different opacities.

Please note: Limit your opacity values to the following percentages for best results:



6

From the top menu, go to **Window**, **Output** then **ATTRIBUTES**, and check **Overprint Fill**. If there is a stroke, it must be set to Overprint Stroke as well.



7

Export your file as a **High Quality Print PDF** and it is ready to print.

CAUTION: Before saving, make sure all fonts are outlined.

Before

applying **RUV** (Multi-Level Raised UV)

After

applying **RUV** (Multi-Level Raised UV)

